

# R S L

Refreshment Systems Ltd.

## Cleaning Guide Touch



### Contact us

[www.refreshmentsystems.co.uk](http://www.refreshmentsystems.co.uk)

For Service:  
[service@refreshmentsystems.co.uk](mailto:service@refreshmentsystems.co.uk)  
01274 750 008

For Ingredients:  
[ingredients@refreshmentsystems.co.uk](mailto:ingredients@refreshmentsystems.co.uk)  
01226 720 482

# AUTOMATIC CLEANING OF COFFEE GROUP - MIXER - MILK FROTHER - STEAM BOILER

**AT THE END OF EACH WORKING DAY , AND/OR IN CASE THE MACHINE WILL NOT BE USED SOME TIME, WE STRONGLY RECOMMEND TO CARRY OUT AUTOMATIC CLEANING OF THE COFFEE GROUP ,THE MIXER AND THE MILK FROTHER**

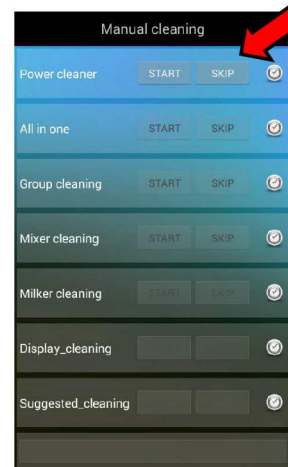
1► Press INFO button



2► Press Manual Cleaning



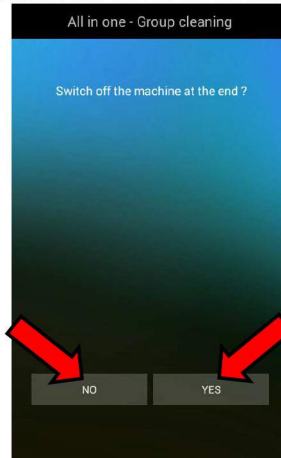
3► Press SKIP next to Power Cleaner



4► Press START next to All in one



5► Press YES or NO depending if you want the machine automatically to switch OFF or not at the end of the cleaning cycle



6► Lift the coffee outlets completely



7► Remove and empty the grounds bin



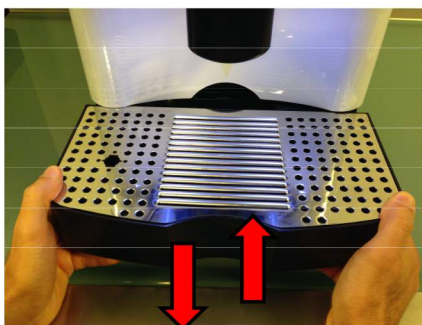
8► Clean the grounds bin compartment.



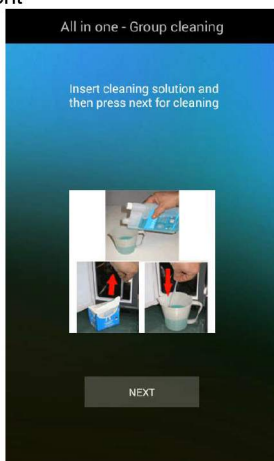
9► Insert the grounds bin



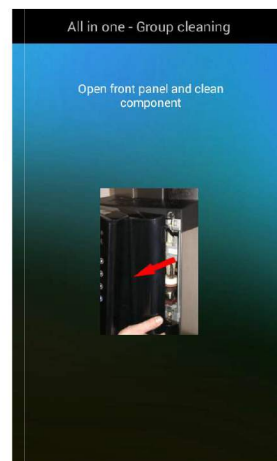
**10►** Remove and empty also the drip tray. Only for machines without direct water discharge



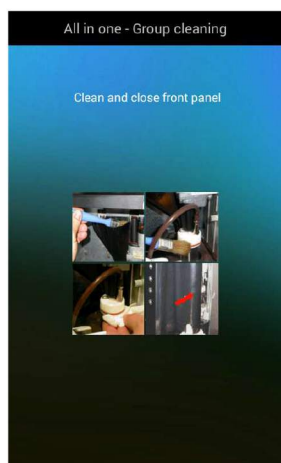
**11►** Insert cleaning solution into an empty container having at least 500ml size. Take the milk feeding tube out of the milk box, then insert it into the container with detergent



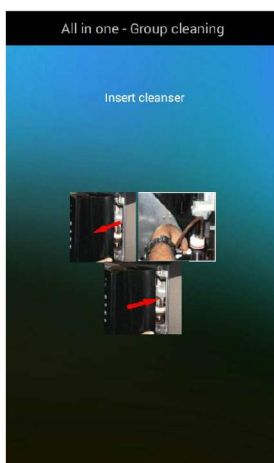
**12►** Open the machine door



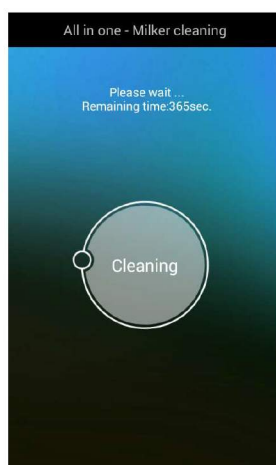
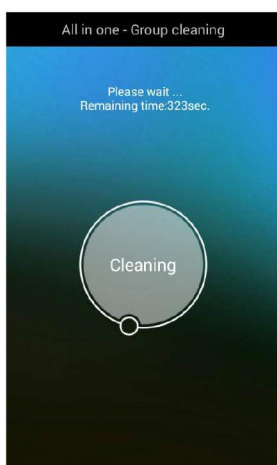
**13►** Clean the group from any coffee residues, then close the machine door



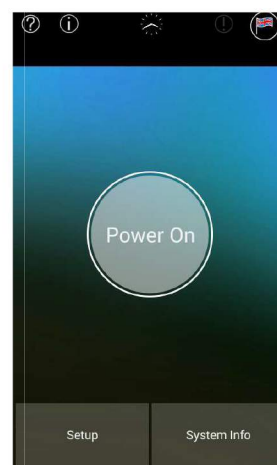
**14►** Open the machine door insert the detergent tablet into the brewing chamber



**15►** Wait the group cleaning ends, afterwards the machine will carry out mixer and milker cleaning cycles if present



**16►** Once the cleaning cycles are finished the display shows select drink page or the machine switches OFF, depending to your selection previously made



#### PLEASE NOTE:

- Do not interrupt the cleaning cycle. If the cleaning cycle is interrupted by any type of operation unrelated to the procedure, when the machine functioning is set back again, the cleaning cycle will automatically be activated.
- Only in case that after the automatic cleaning process of the coffee outlet or the milk frother are not properly dispensing, carry out a manual cleaning; see the following steps.



**FOR CLEANING OPERATIONS, WE STRONGLY RECOMMEND TO USE THE FOLLOWING DETERGENT PRODUCTS:**

**GROUP CLEANING TABLETS**

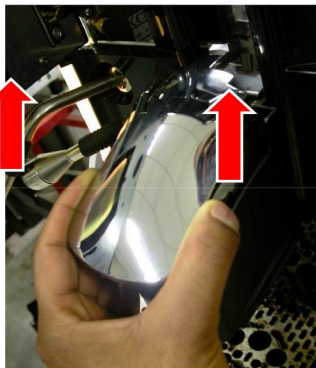


**MILK FROTHER CLEANER**



**MANUAL CLEANING OF MILK FROTHER AND COFFEE OUTLET**

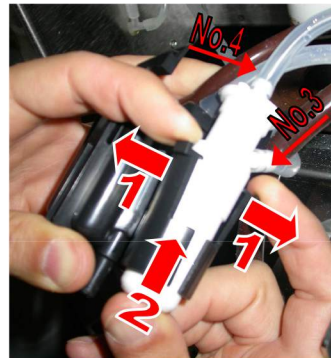
**1►** Open the machine door and remove the coffee outlet cover .



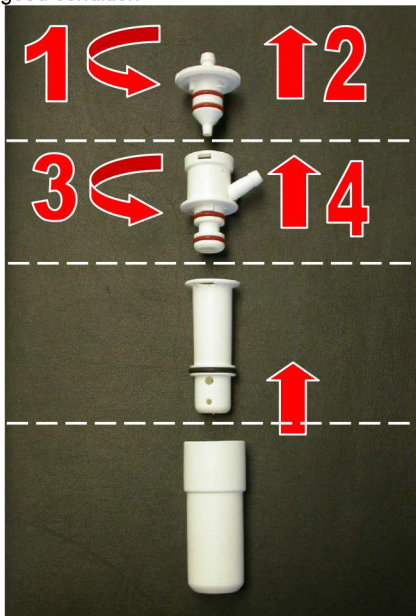
**2►** Remove the coffee outlet from its holder.



**3►** Remove the milk frother from the coffee outlet and disconnect Silicone tubes No. -3- and -4-.



**4►** Disassemble the milk frother in all its parts (first by turning and then by pulling as shown in the picture) and wash it either by hand or in a dishwasher. Make sure that all the holes are free from milk residues and also to use provided tools to clean the holes. Check also that the O-rings are in good condition



**5►** Disassemble the coffee outlet (1) and wash it by hand or in a dishwasher. Make sure that all the holes are free from any coffee residues , and also to use provided tools to clean the holes.



# MANUAL CLEANING OF MIXER - ONLY FOR MACHINE WITH INSTANT PRODUCT UNIT

WE STRONGLY RECOMMEND CLEANING THE MIXERS ONCE A DAY

1► Open the dispenser unit door



2► Remove the pipe from the mixer



3► Turn the flange 1 anticlockwise, then remove the mixer 2



4► Remove the Decanter



5► Rinse the Mixer and the Decanter in a sink



6► Reinsert the Decanter



7► Turn the flange clockwise to reinsert the mixer



8► Reinsert the pipe from the mixer





## OTHER RECOMMENDED CLEANING

### DRIP TRAY CLEANING

Once a day rinse the drip tray in a sink.



### GROUND'S BIN CLEANING

Once a day rinse the grounds bin in a sink.



### HOPPER CLEANING

Once a week clean the hopper by means of a cloth and approved food detergent



### CHUTES CLEANING

1► Open the decaffeinated door and remove the chute .



2► Once a week clean the decaffeinated chute by means of a brush and approved food detergent



3► Once a week clean the coffee chute by means of a brush and approved food detergent

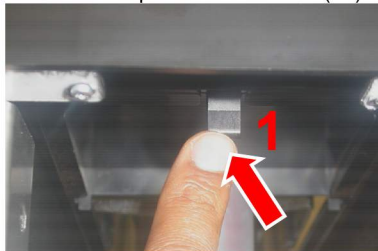


### DISPENSER CLEANING ONLY FOR MACHINE WITH INSTANT PRODUCT UNIT

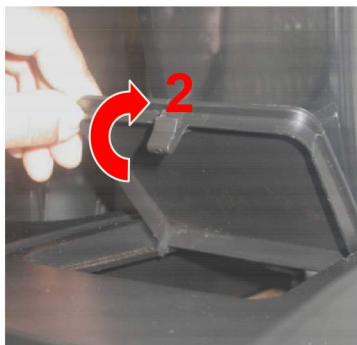
1► Open the dispenser unit door.



2► Press the plastic tooth inside ( 1 )



3► Remove the plastic cover ( 2 )



4► Remove the canister



5► Once a week clean the dispenser by means of a cloth and approved food detergent

