

# User Manual

## SCS Compact



**R S L**

EST. 1967

# Introduction

## Customer information

### Safety

The coffee machine is only allowed to be operated by persons who have read and understood these instructions. All instructions must be followed exactly. These operating instructions must always be available at the place where the machine is used.

### The operating instructions

These operating instructions make it easier for you to get to know your coffee machine and to use all possible applications. This manual contains important information for proper and safe operation. Following them helps to avoid dangers and unnecessary repair costs. This increases the reliability and service life of the coffee machine.

### Who is allowed to operate the coffee machine?

This device is allowed to be used by children over 8 years of age and by persons with reduced physical, sensory or mental abilities or lack of experience and knowledge if they are supervised or have been instructed in the safe use of the device and understand the resulting hazards. Children are not allowed to play with the device. Cleaning and maintenance work must not be carried out by children.

### Faults

Error messages indicate an unusual condition (error) or a malfunction of the coffee machine. The display shows which part of the machine is causing the fault.

Switch off the machine at the main switch and switch it on again after a short wait of about one minute. Try to dispense a product again. If the attempt is not successful, switch off the machine and contact customer service.



### Water quality

The quality of the water is an important factor in the production of a good and tasty coffee. Too much lime or various flavourings can significantly reduce the quality of your coffee. In this case too, we're glad to make our expertise available to you. Get in touch with us.

### Food suitability

The coffee machine is approved for use with the following foods:

- Drinking water via fixed water connection
- Pure coffee beans without roasting additives in the bean container (no added sugar, etc.)
- Decaffeinated, machine-suitable coffee powder for the decaffeinated chute (no soluble coffee)

For machines with instant module:

- Machine-suitable instant powder

For machines with milk module:

- Milk (2 - 5 °C)

### Maintenance and support

With the purchase of a Rex-Royal coffee machine you have opted for the highest quality. Here are some tips on how to keep your machine in perfect condition for a long time and how to keep the quality of the coffee at an optimum level all the time.

### HACCP – hygiene concept and cleaning instructions

For a hygienically clean coffee machine, the instructions in the cleaning instructions must always be followed.

The cleaning instructions are a separate document supplied with the coffee machine (see cleaning box). If required, you can also obtain these instructions from your supplier or from our website [www.rex-royal.ch](http://www.rex-royal.ch).

Thanks to the innovative design, cleaning is quick.

### The optimal beverage quality

Observe the general and country-specific hygiene regulations for coffee, milk and instant products.

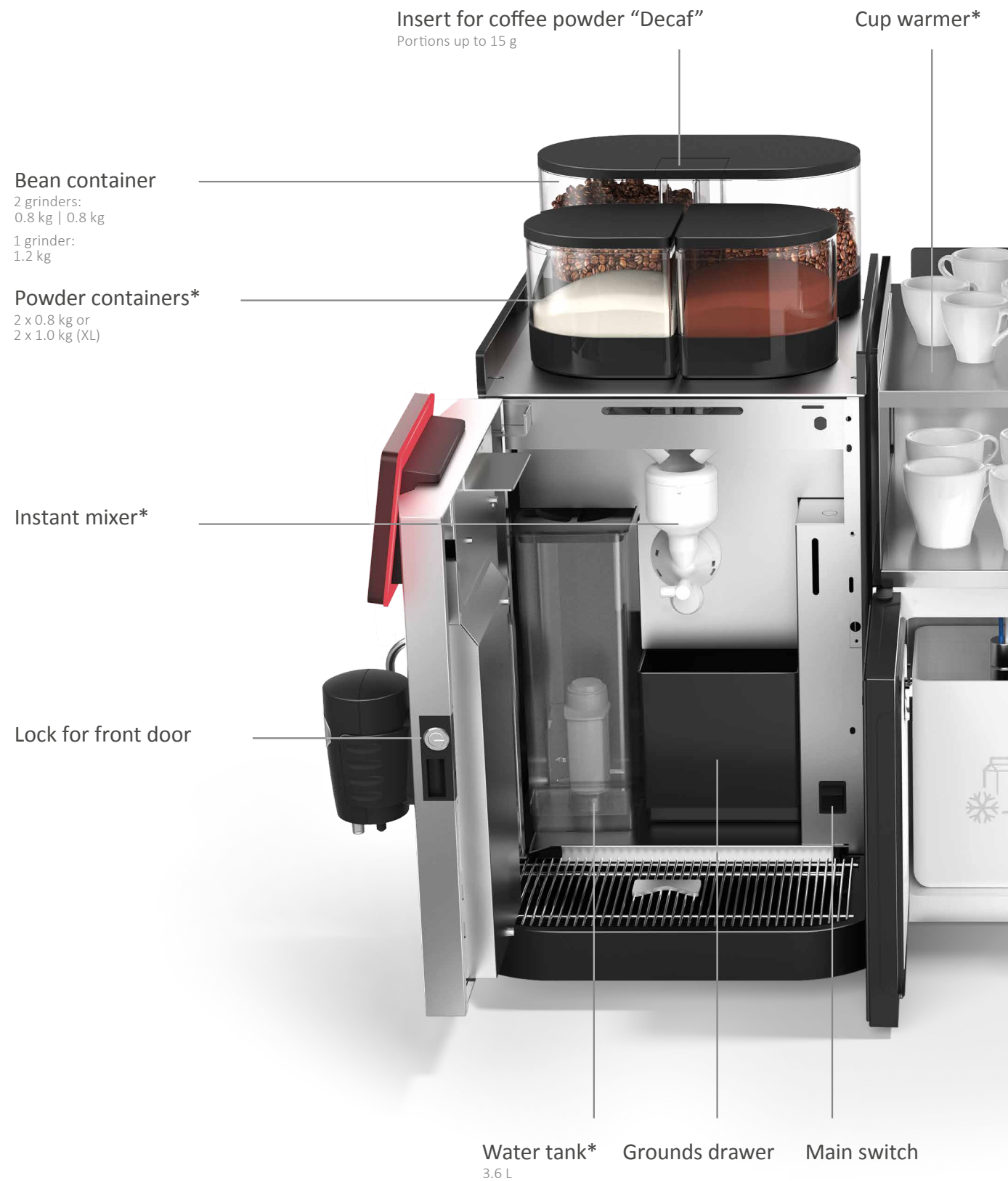
- Use only chilled milk at a maximum temperature of 5 °C.
- Only use high quality coffee. Try to adapt the type of coffee to your requirements in terms of strength, variety, roasting, etc.
- Store the coffee in a cool, dry place and never leave the beans open.
- Close the container immediately after filling the beans. Never fill the bean container before a long break (e.g. overnight or over the weekend).
- Only use instant powder suitable for automatic machines.
- Rinse the machine after a long break.

### Service

A professional machine needs professional service. We recommend that you have the machine serviced once a year by our well-trained service technicians. Regular maintenance extends the life of the coffee machine. In addition, our service professional will check your machine for optimum quality and functionality every time. The best care for your Rex-Royal coffee machine can be guaranteed by a service contract.

## Overview

Coffee machine



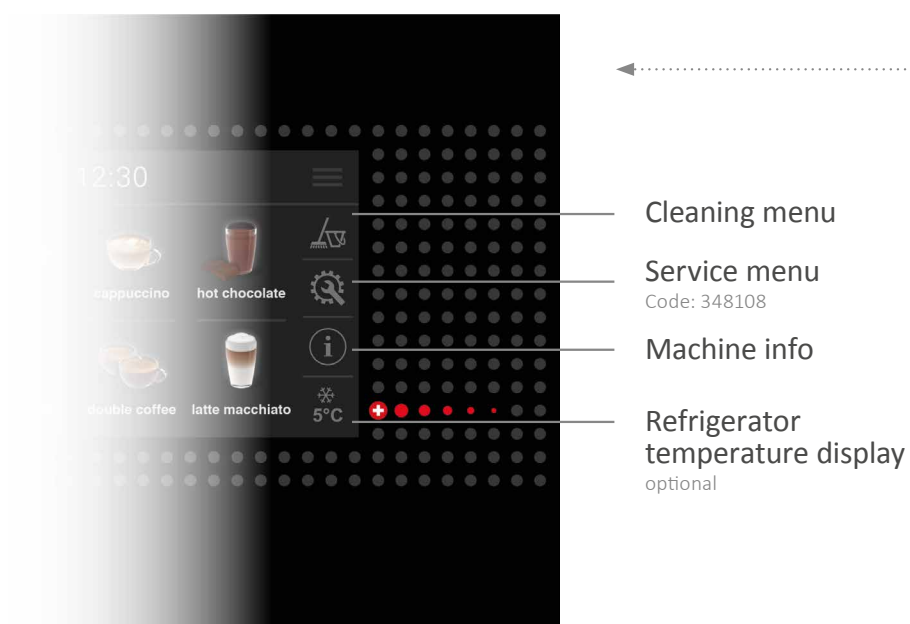
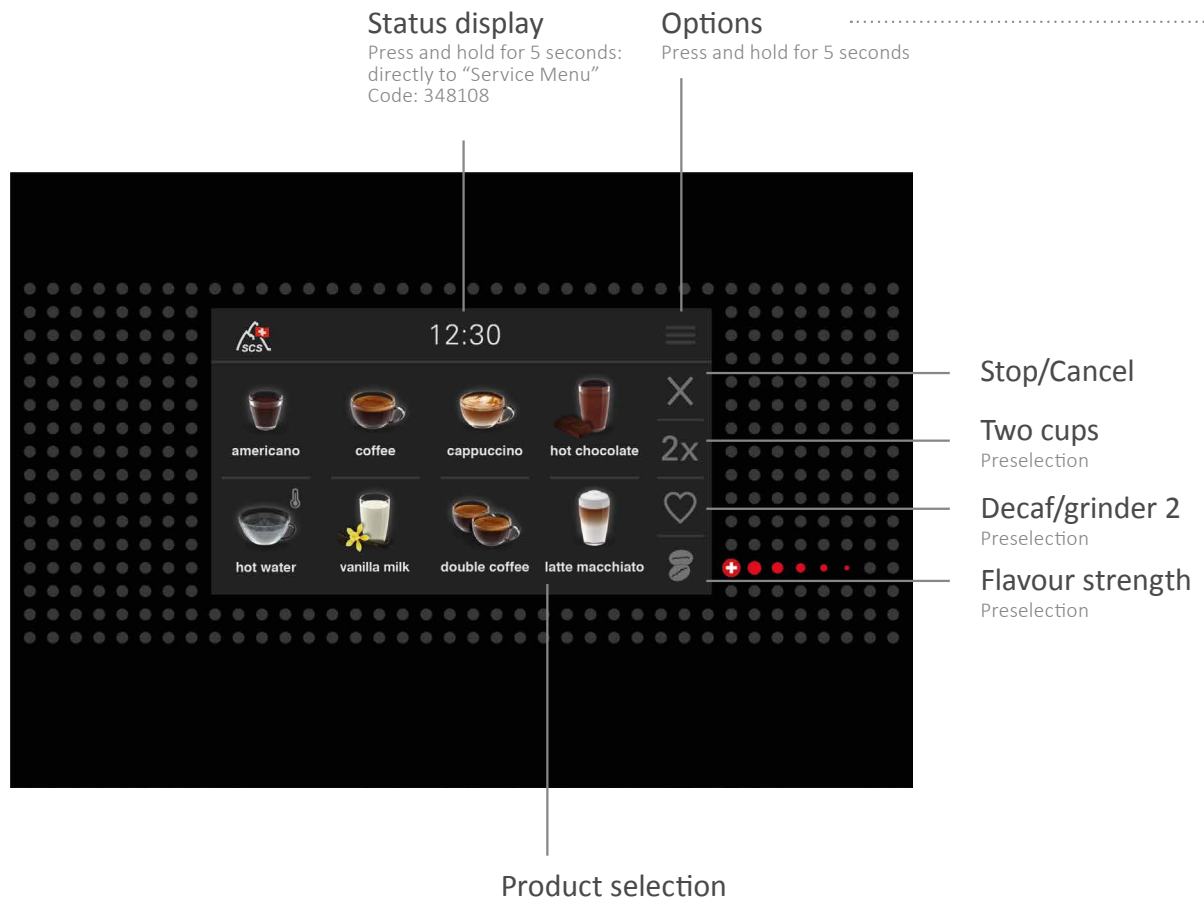
\*optional



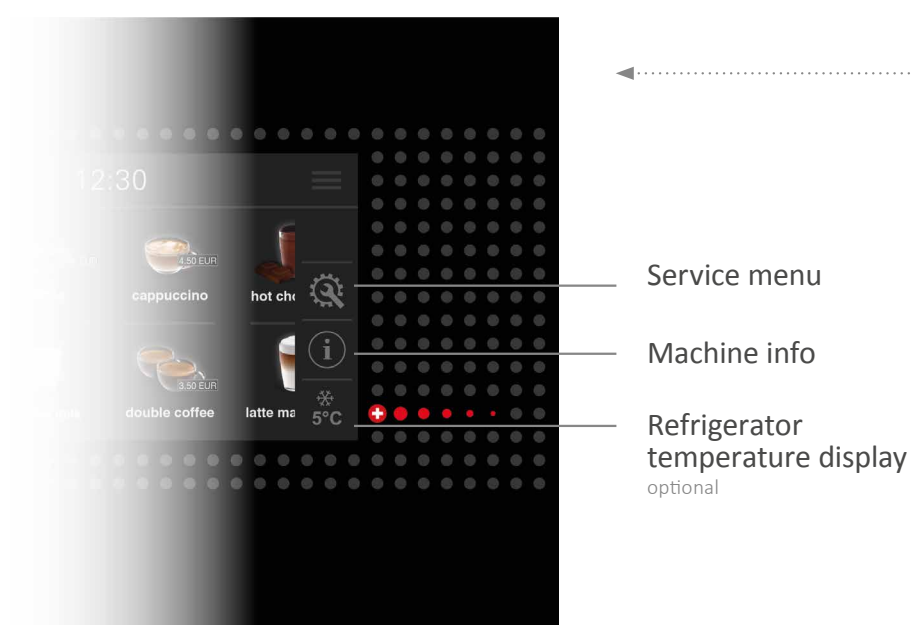
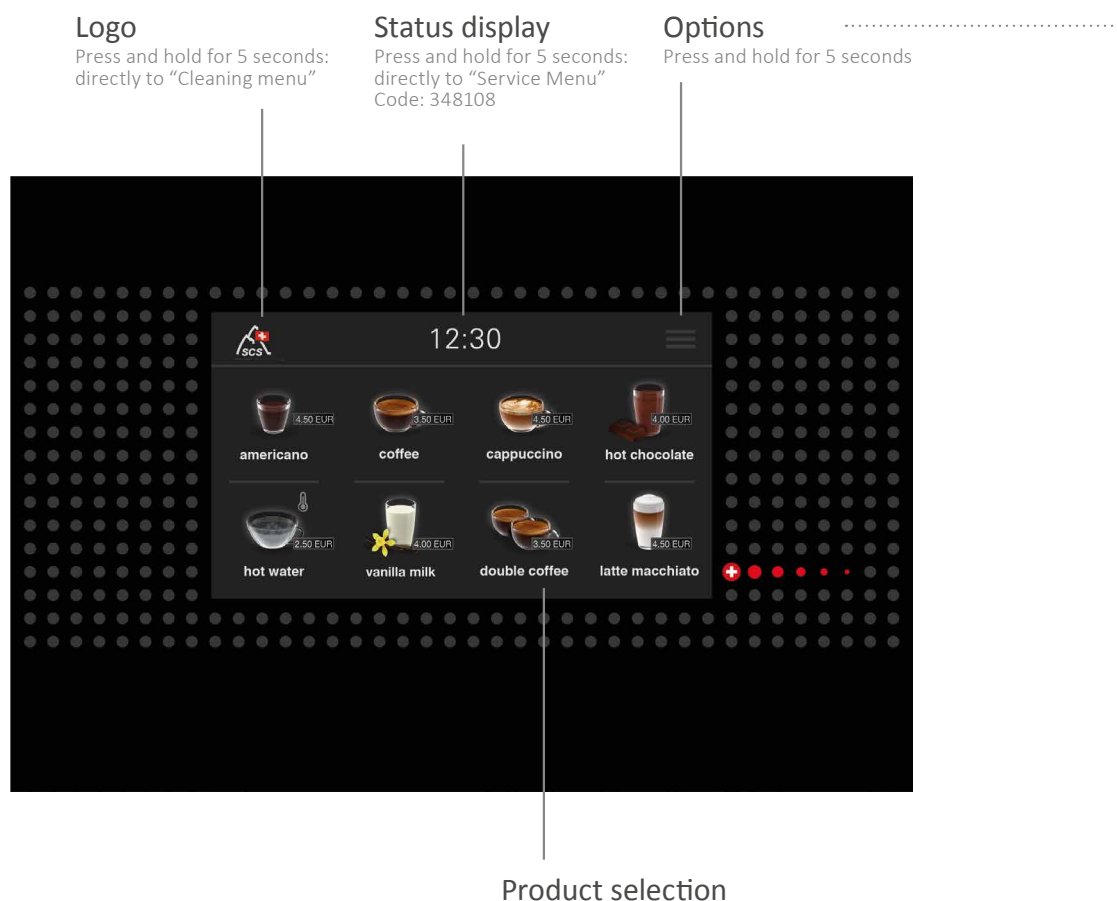


# Touchscreen

Operated mode



## Self-service mode



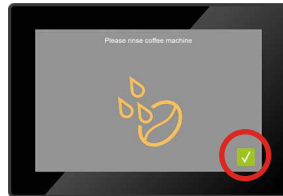
# Operation

## Switching on/off



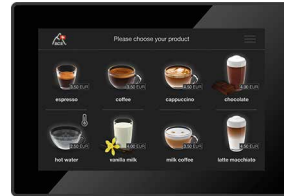
Open front door and set main switch to position I. Then close front door again.

>



Confirm system message with ✓ to rinse the coffee machine.

>



After a short time the machine will have finished rinsing, will be warmed up and is ready for use.



**Note:** Before switching off, the coffee machine must be cleaned. Please follow the instructions in the cleaning manual.

## Filling bean container



Lift the container lid, fill in beans.  
**Tip:** max. 1 day's supply

>



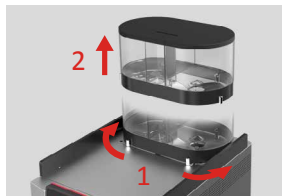
If necessary, confirm the system message on the touchscreen with ✓.

## Filling powder containers (optional)

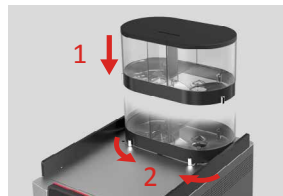


Lift the container lids, fill in instant powder.

## Remove/insert bean container



- 1 Turn the locking devices
- 2 Remove the container



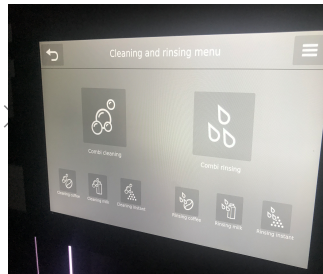
- 1 Set up the container
- 2 Turn the locking devices

# Daily Cleaning Cycle

## Combi Rinsing



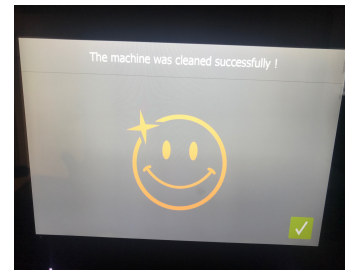
Click on the button with 3 lines in the top right-hand corner of the screen.



On the next screen select the Combi rinsing option



The machine will carry out the rinsing process. Ensure that there is a bowl or jug beaneath the drink dispenser (as water will be flushed through the machines)

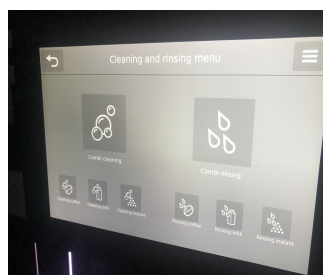


Once the machine has finished a message will appear to confirm completion.

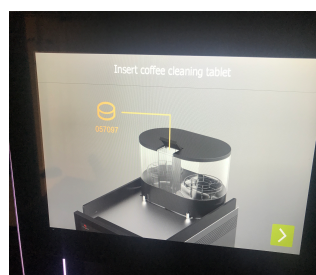
## Combi Cleaning



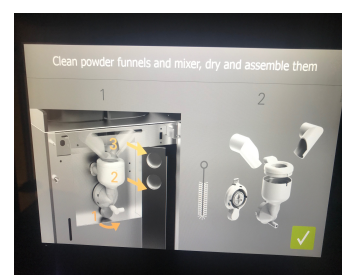
Click on the button with 3 lines in the top right-hand corner of the screen.



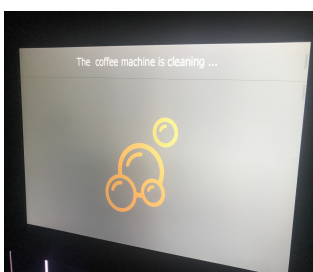
On the next screen select the Combi cleaning option



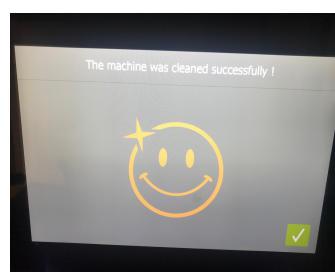
The machine will ask for a tablet to be placed through the decaf coffee chute (in the centre of the bean canister).



The machine will direct you through a number of cleaning processes including; emptying the grounds bin, removing the mixing bowl and cleaning the drink dispenser. Follow the on screen instructions to complete each of the processes.

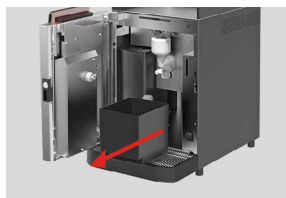


The machine will carry out the rinsing process. Ensure that there is a bowl or jug beaneath the drink dispenser (as water will be flushed through the machines)

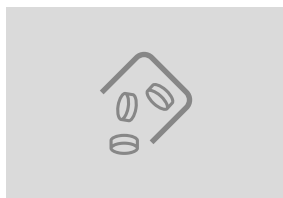


Once the machine has finished a message will appear to confirm completion.

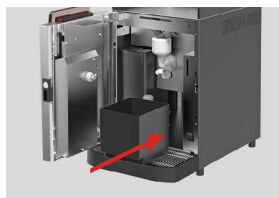
## Emptying the grounds drawer



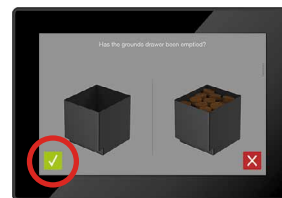
Open the front door and remove the grounds drawer.



Empty and clean the grounds drawer.



Reinsert the grounds drawer and close the front door.



Confirm system message with ✓ if the grounds drawer has been emptied. Otherwise, press ✗.

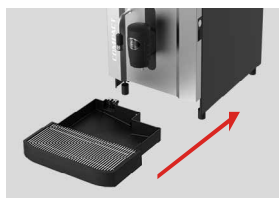
## Cleaning the drip tray



Remove the drip tray.



Clean the grid and tray.



Place the drip tray back.



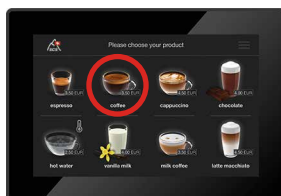
**Note:** Follow the information in the cleaning manual.

## Product dispensing

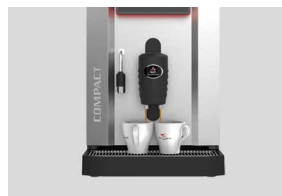
### Dispensing beverages



Move the beverage outlet into position (↑) over one or two cups.

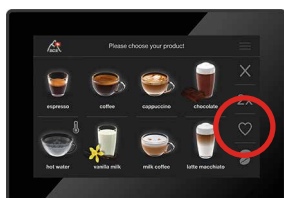


Select the desired product on the touchscreen.



Beverage dispensing starts.  
**Attention: Danger of burns!**  
Don't touch the area under the outlet.

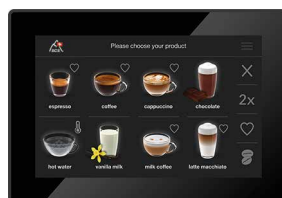
### Dispensing beverages with pre-ground coffee



Press the heart symbol (♥) on the touchscreen.



Put coffee powder (max. 15 g) in the chute.



Follow the instructions for "Dispensing beverages".

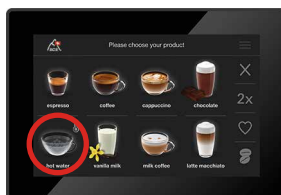


**Note:** Beverages containing ground coffee cannot be dispensed in self-service mode.

### Dispensing beverages with hot water



Move hot water outlet into position over a cup or glass.

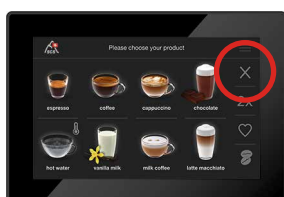


Select the desired product on the touchscreen.

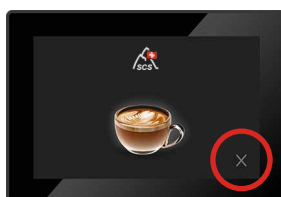


Beverage dispensing starts.  
**Attention: Danger of burns!**  
Don't touch the area under the outlet.

### Premature termination



Operated mode:  
Press stop symbol (X)



Self-service mode:  
Press stop symbol (X)



