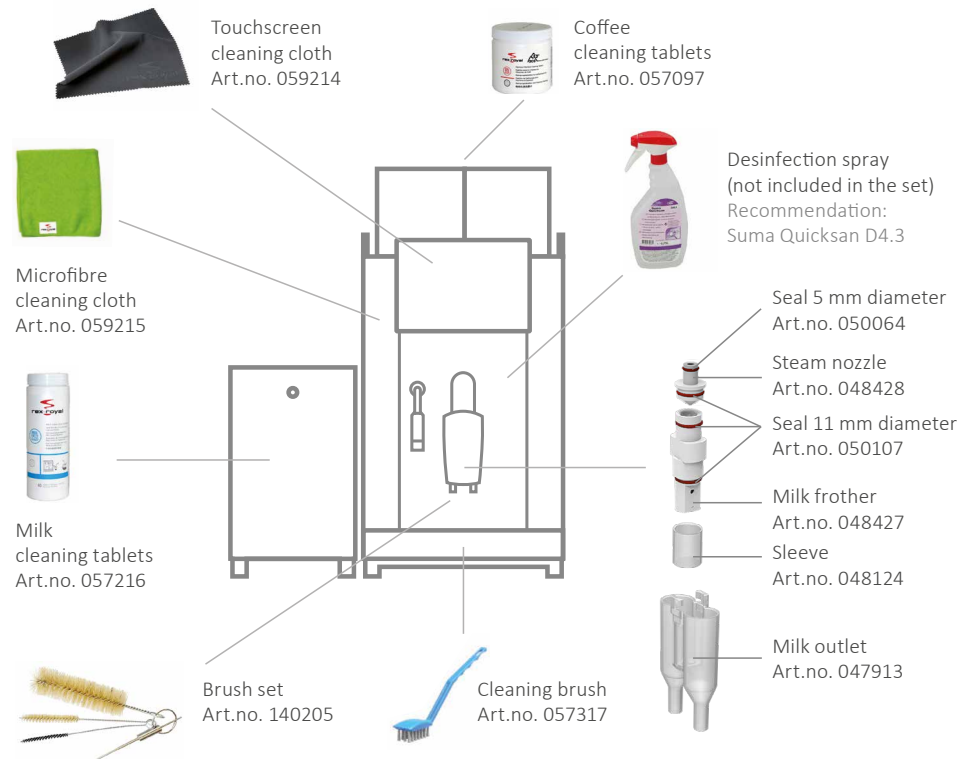


Cleaning instructions

Rex-Royal S200 | Rex-Royal S300 | Rex-Royal S500 | SCS Compact



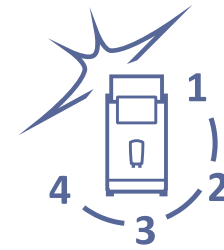
Important information

- Once every day, it is necessary to clean all systems that have been used at least once.
- Depending on the setting, cleaning must be started manually or the fully automatic coffee machine requests cleaning at the programmed time.
- Use only the cleaning agents listed above, as they are optimally adapted to the automatic cleaning program. Before using the cleaning agents, observe the safety instructions on the packaging. Please ask for the safety data sheets if the safety instructions are not printed in your language.
- The ingredients of the cleaning agents can cause eye and skin irritation and be detrimental to health if inhaled or swallowed.
- The cleaning agents must be kept out of reach of children and under lock and key, and are only allowed to be accessible to authorised persons. The manufacturer is not liable for misuse.
- Wear protective gloves whenever possible.
- Never open the door during cleaning and never remove the residual water tray unless requested to do so by the fully automatic coffee machine.
- Do not switch off the fully automatic coffee machine during cleaning.
- There is a risk of burns from hot liquids or steam. Do not touch any outlet during automatic cleaning, do not reach into the dispensing area. Only touch the touchscreen when requested to do so.
- Do not clean the fully automatic coffee machine with a water jet or high-pressure cleaner and never pour water over it.
- Keep the microfibre cloth and cleaning brushes in a clean and dry condition. Wash the microfibre cloth and the cleaning brushes regularly.

Rex-Royal hygiene concept

Cleaning must be carried out correctly for consistently perfect coffee pleasure. Follow the information in these cleaning instructions and on the touchscreen of your fully automatic coffee machine to maintain its hygiene. Please contact your service partner or Rex-Royal AG if you have any questions.

Please use cleaning gloves for reasons of hygiene.



1



Soaking/prewashing

Disassemble the parts to be cleaned and place them in warm water. If necessary, use a mild cleaning agent.

2



Removing residues

Remove all residues using the cleaning brushes and cleaning cables, and then rinse with warm water.

3



Drying

Dry all parts thoroughly with the green microfibre cloth.

4



Disinfecting

- 1 Spray undiluted product onto a clean, dry surface. Ensure complete wetting.
- 2 Allow to act for 5 minutes (according to EN 1276, EN14476 and DGHM (German Society for Hygiene and Microbiology)).
- 3 Allow surfaces to air-dry, if necessary redry thoroughly.

Automatic cleaning program



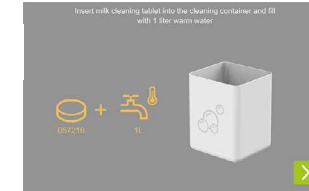
Press and hold MENU or LOGO for at least 5 seconds. Then press the CLEANING button.



Press the COMBI-CLEANING button to start cleaning.



Remove, empty, clean and reinsert the grounds container. After that, press the arrow key to go to the next step.



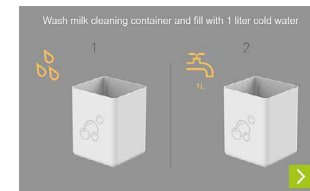
Fill the cleaning container with 1 litre of warm water and completely dissolve a milk cleaning tablet in it. Then hang the milk aspirator into the cleaning container. Also clean the milk container according to the hygiene concept.



Open the tablet chute and insert a coffee cleaning tablet.



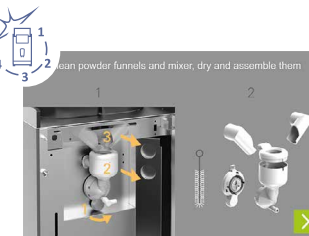
The coffee machine is cleaning... The next step will shortly be displayed on the screen.



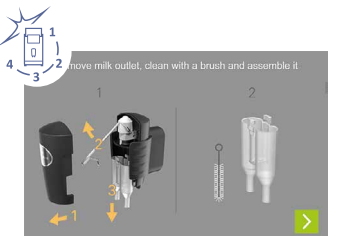
Rinse the cleaning container and fill it with 1 litre of cold water. Then hang the milk aspirator into the cleaning container.



Cleaning program is running, the next step will shortly be displayed on the screen.



Remove the parts as shown on the display, clean them according to the hygiene concept and reassemble them. Follow the detailed instructions in the "Removal of the instant mixing unit" on the back page.



Remove the parts as shown on the display, clean them according to the hygiene concept and reassemble them. Follow the detailed instructions "Removal of the milk frother / coffee outlet" on the back page.



The fully automatic coffee machine performs an instant rinsing.



Cleaning has been completed. Touching the touchscreen completes the program.



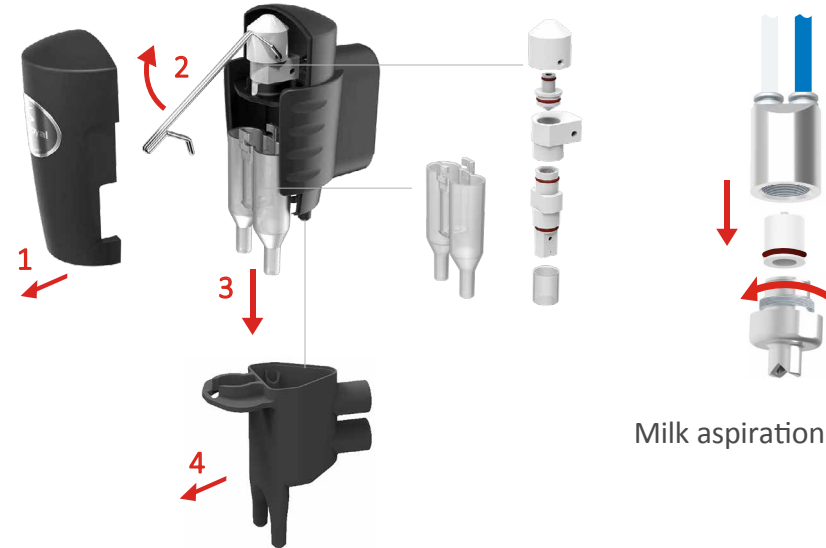
If mandatory cleaning has been activated, this message is displayed if necessary.



If the cleaning process has been interrupted, this message appears. Touch the touchscreen to continue cleaning.



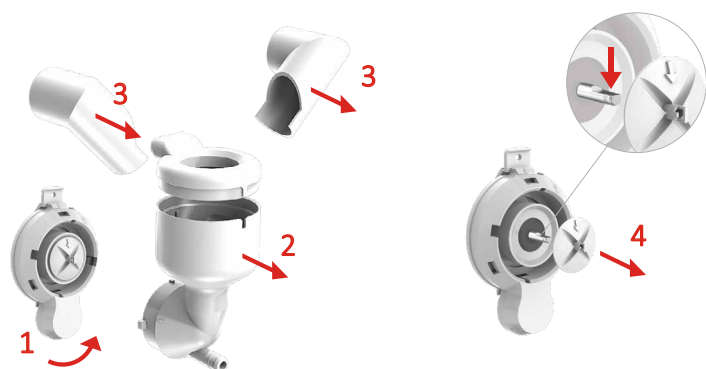
Removal of the milk frother / coffee outlet



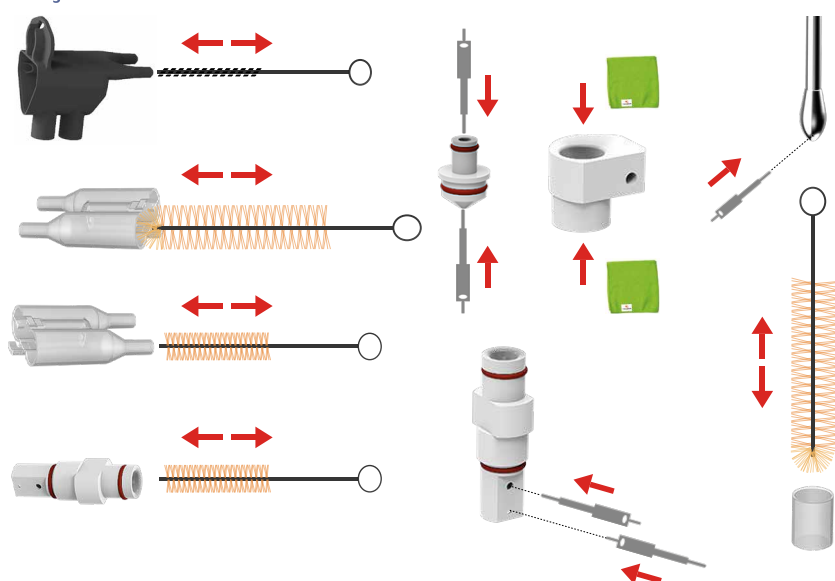
Milk aspiration



Removal of the instant mixing unit / instant mixer

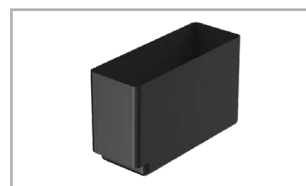


Use of cleaning utensils

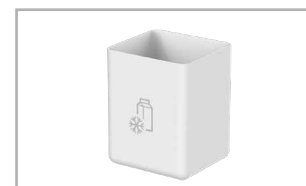


Daily cleaning

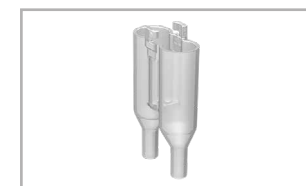
The following components must be cleaned manually every day during automatic cleaning. Follow the Rex-Royal hygiene concept as described on the first page.



Empty and clean the grounds container.



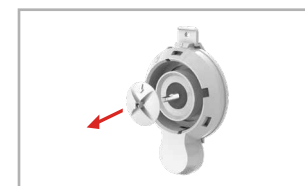
Empty the milk and clean the milk container.



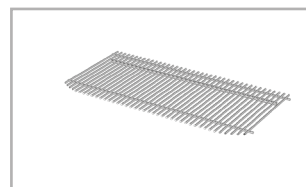
Remove and clean the milk frother. See "Removal of the milk frother"!



Remove and clean the instant mixing unit. See "Removal of the instant mixing unit"!



Remove and clean the instant mixer. See "Removal of the instant mixer"!
Make sure that the instant mixer has been inserted correctly after cleaning.



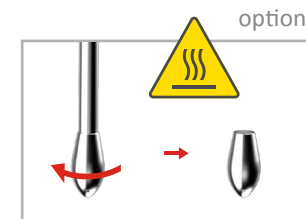
Remove the drip grid from the residual water tray and clean it.



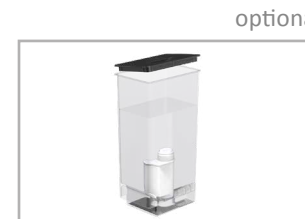
Empty and clean the residual water tray.



Use the microfibre cloth to clean the cooling unit and the milk aspiration and pipes, then spray in the disinfection spray and allow to dry.



Danger of burns!
Switch off the fully automatic coffee machine.
Unscrew the steam nozzle and clean the individual parts completely inside and out. Then screw on the steam lance again.



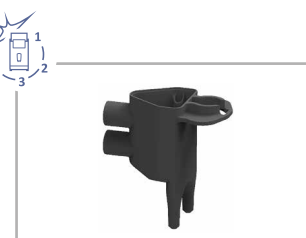
Empty any water from the water tank and refill with fresh water.



Weekly cleaning



Remove and clean the steam nozzle in the milk frother. See "Removal of the milk frother"!



Remove and clean the coffee outlet. See "Removal of the coffee outlet"!



Remove the coffee container and instant container; remove any residues with a mild cleaning agent and dry well.



Clean the outside of the fully automatic coffee machine with the microfibre cloth. Spray in disinfectant spray and allow to dry.



Descal the water tank with a descaling agent. Remove the water filter before descaling.